



CHRISTOPHER NEWPORT  
UNIVERSITY

# ORIENTATION GUIDEBOOK



2024



---

CHRISTOPHER NEWPORT UNIVERSITY  
ORIENTATION & STUDENT INVOLVEMENT

---

**Cover photo: Each fall, incoming students ring the bell after the Community of Scholars Convocation, and each spring, the graduates ring it in celebration of their commencement.**

# WELCOME NEW CAPTAINS



# STUDENT SCHEDULE

# SETTING SAIL

## DAY ONE

**8 a.m.**

**Check-in**

York River Hall

**9 a.m.**

**Welcome**

Diamonstein Concert Hall

Your official welcome to the University outlining what is to come.

**10 a.m.**

**Captain 101**

Gaines Theatre

Review what you can expect from your Setting Sail experience as well as what we expect from you in order to get the most out of your time at Orientation.

**10:40 a.m.**

**Crew Time - Getting to Know You**

Crew Time Room

Spend time with your Crew Leader and fellow crew members getting to know one another.

**11:45 a.m.**

**Lunch**

Commons

**1 p.m.**

**Crew Time - Leadership Challenge**

Auxiliary Gym/Peebles Theatre

Join in a "Crew vs. Crew" challenge event that will encourage leadership and team development with your fellow Captains.

**2 p.m.**

**Living the (Res)Life**

Gaines Theatre

The Office of Residence Life will share tips about living in the residence halls, and provide information to prepare you for sharing a space with your new roommate.

**2 p.m.**

**Commuter Connections**

Freeman 101

Learn about resources available to you if you will be commuting to campus.

**2:55 p.m.**

**Officially a Captain**

Gaines Theatre

Hear from the Office of the Registrar and Center for Career Planning about your course schedule and academic plan.

**3:50 p.m.**

**Crew Time - Academic Focus**

Crew Time Room

Follow up with your Crew Leader about academic life and the various technological platforms used at CNU.

**5 p.m.**

**Breakout Session #1**

Various Locations, David Student Union

**Multicultural Student Experience**

Jefferson

**LGBTQ+ Student Experience**

Madison

**Marching Captains Interest Session**

Crow's Nest

**The 411 on the 757**

Center for Community Engagement

**True Colors-Leadership**

**Exploration Activity**

Ballroom

**Honors Program**

Washington

**Silver, Blue and You**

Harrison

**5:30 p.m.**

**Breakout Session #2**

Various Locations

**Multicultural Student Experience**

Jefferson, David Student Union

**LGBTQ+ Student Experience**

Madison, David Student Union

**The 411 on the 757**

Center for Community Engagement

**True Colors-Leadership**

**Exploration Activity**

Ballroom, David Student Union

**Silver, Blue and You**

Harrison, David Student Union

**Launch Meeting**

Torggler 102, Torggler Fine Arts Center

This meeting will be for all students participating in the Launch Program.

**6 p.m.**

**Dinner**

Commons

**7:30 p.m.**

**Crew Show**

Diamonstein Concert Hall

Sit back and relax as the Crew Leaders share some tips about college and what it means to be a Captain.

**8:30 p.m.**

**Evening Activities**

Various Locations, Freeman Center

**Canvas Painting & Friendship**

Bracelet Making, Auxiliary Gym

Open Gym, Fieldhouse

Fireside Lounge, Freeman Courtyard

Nintendo Switch games, Freeman 101

Karaoke, Freeman 102

# STUDENT SCHEDULE

# SETTING SAIL

## DAY TWO

**8 a.m.**

### Calculus Readiness Assessment

Various Luter Classrooms

\*Select students required to take this assessment will be notified prior to Setting Sail.

Students not taking the Calculus Readiness Assessment will have free time in the morning and are welcome to attend the resource fair.

Students who are taking the Calculus Readiness Assessment will be finishing their exams between 9:15 - 10 a.m. Following their completion, students will rejoin their Crew for brunch.

**8 a.m.**

### Resource Fair

Breezeway, David Student Union

Talk with different campus offices about resources available to you during your time at Christopher Newport.

**9 a.m.**

### Brunch

Regattas

**10:30 a.m.**

### Getting Involved at CNU

Gaines Theatre

Learn about different opportunities to get involved on campus, such as student organizations, on-campus jobs, and more.

**10:50 a.m.**

### Crew Time - Campus Life

Crew Time Room

Dive into the opportunities available to get involved outside of the classroom through student organizations, service, on-campus employment, internships, research and study abroad opportunities.

**11:45 a.m.**

### Community of Honor

Diamonstein Concert Hall

Christopher Newport's Honor Code is key to campus life. Learn about our community of honor and our expectations to live an honorable life.

### Following the Closing

#### Captains Card Photos

Incoming students are required to submit a photo for their student identification card by July 31, 2024. If you would like to take your photo at the conclusion of Setting Sail, the Welcome Center in the David Student Union will be open to take photos until 5 p.m.

### Residence Hall Rooms Show:

There will be a showroom available in each of the three first-year residence halls (York River, Potomac River and Santoro Hall) for you to see during your time on campus. These rooms will be available from 12:30-2 p.m. on day two.

### President's Leadership Program Students

PLP students staying for Leadership Adventure will need to eat lunch before check-in. Lunch is provided for PLP students in Regattas. Guests are able to join their student for lunch in Regattas, but will need to pay for lunch separately. Check-in for Leadership Adventure will begin at 2 p.m. on the first floor of the David Student Union.

*\*Please note that there are no sessions for parents during Leadership Adventure.*

Student pickup at the conclusion of Leadership Adventure will be at the Gaines Theatre in the Freeman Center from 11:30 a.m.-Noon. Parking will be available in the visitor lot-B.



# FAMILY & GUEST SCHEDULE

# SETTING SAIL

## DAY ONE

**8 a.m.**

**Check-in**

Jane Susan and Joe Frank Atrium,  
Ferguson Center for the Arts

**9 a.m.**

**Campus Welcome and  
Conversation About College**

Diamonstein Concert Hall

Your official welcome to our community, information on what is to come, and a session on how you can support your student's transition to college.

**11 a.m.**

**Keys to Academic Success**

Diamonstein Concert Hall

Our academic leadership will discuss expectations and resources available to help students succeed in the classroom and how these differ from the high school experience.

**12:10 p.m.**

**Lunch**

Regattas, David Student Union

**12:25 - 2 p.m.**

**BREAKOUT SESSIONS**

Various Locations,  
David Student Union

**12:25 p.m.**

**Disability Support Services**

Ballroom

Learn about the process for requesting accommodations, as well as resources for students with disabilities.

**1:15 p.m.**

**Pillars to Success**

Ballroom

Learn more about the "Four Pillars to Success" for your student's time at Christopher Newport. Hear from Study Abroad, the Office of Research and Creative Activity, and the Centers for Community Engagement and Career Planning about a number of co-curricular opportunities to enhance your student's educational experience.

**1:30 p.m.**

**Student Panel**

Center for Community Engagement

Hear from a panel of current and past students on what life is like as a CNU student.

**1:30 p.m.**

**Diversity, Equity & Inclusion  
on Campus**

Washington

Hear from University leadership about the importance of diversity, equity and inclusion on campus and opportunities for students to get connected.

**2:05 p.m.**

**From the Classroom to a Career**

Ballroom, David Student Union

Hear from the Office of the Registrar and the Center for Career Planning on the value of a liberal arts education, the CNU academic curriculum, and how your student can take what they are learning from the classroom to their career.

**2:50 p.m.**

**Commuter Connections**

Washington, David Student Union

Learn about resources for our commuter students and ways for them to engage in campus life.

**3 p.m.**

**Living the (Res)Life**

Diamonstein Concert Hall

The Office of Residence Life will share tips about living in residence halls and information to prepare your student for sharing a space with their new roommate.

**3:45 p.m.**

**Health and Safety**

Diamonstein Concert Hall

This question-and-answer session will address safety and health services on campus.

**4:20 p.m.**

**Family Reception**

Jane Susan and Joe Frank Atrium,  
Ferguson Center for the Arts

Join us for a family social hour to meet President's Parent Council members, faculty and staff.

**5 p.m.**

**President's Leadership  
Program Meeting**

Diamonstein Concert Hall

Please attend this session to meet the staff and learn more about PLP.

*\*Note this session will only occur during Session I (June 17) and Session III (June 24) for families of students in PLP.*

**5:15 p.m.**

**Dinner**

Regattas, David Student Union

**5:30 p.m.**

**Launch Meeting**

Torggler 102, Torggler Fine  
Arts Center

Guests of students who are in the Captains Launch Program should attend.

**6 p.m.**

**Tour the Torggler**

Torggler Fine Arts Center

Check out our fine arts center, which is open for self-guided tours.

**7:30 p.m.**

**Crew Show**

Diamonstein Concert Hall

Sit back and relax as the Crew Leaders share some tips about college.

# FAMILY & GUEST SCHEDULE

# SETTING SAIL

## DAY TWO

**7:30 a.m.**

**Breakfast**

Regattas, David Student Union

**8 a.m.**

**BREAKOUT SESSIONS**

Various Locations

**Athletics**

Ballroom, David Student Union

Families of students playing an NCAA sport or varsity sport (sailing, cheer, dance) should attend this session to learn about expectations and resources for our student-athletes.

**Campus Tour**

Christopher Newport Hall

If you have not been able to tour our beautiful campus, please join us at the bottom of the stairs in front of Christopher Newport Hall.

**Resource Fair**

Breezeway, David Student Union

Talk with different campus offices about resources available to your student during their time at Christopher Newport.

**9:30 a.m.**

**Money Matters**

Ballroom, David Student Union

The Offices of Student Accounts and Financial Aid will share important information regarding aid, billing, refunds and payment options.

**10:25 a.m.**

**Campus Services Panel**

Ballroom, David Student Union

Learn about dining services, parking on campus, purchasing textbooks, IT Services, and many more important resources.

**11:25 a.m.**

**Next Steps**

Ballroom, David Student Union

Wrap up Setting Sail with parting words and friendly reminders.

**11:45 a.m.**

**Community of Honor**

Diamonstein Concert Hall

The Honor Code is key to campus life. Learn about our community of honor and our expectations to live an honorable life.

**Following the Closing**

**Captains Card Photos**

Incoming students are required to submit a photo for their student identification card by July 31, 2024. If your student would like to take their photo at the conclusion of Setting Sail, the Welcome Center in the David Student Union will be open to take photos until 5 p.m.

**Residence Hall Showrooms:**

There will be a showroom available in each of the three first-year residence halls (York River, Potomac River, and Santoro Hall) for you to see during your time on campus. These rooms will be available from 12:30-2 p.m. on day two.

**President's Leadership Program Students**

PLP students staying for Leadership Adventure will need to eat lunch before check-in. Lunch is provided for PLP students in Regattas. Guests are able to join their student for lunch in Regattas, but will need to pay for lunch separately. Check-in for Leadership Adventure will begin at 2 p.m. on the first floor of the David Student Union.

Student pickup at the conclusion of Leadership Adventure will be at the Gaines Theatre in the Freeman Center from 11:30 a.m.-Noon. Parking will be available in the visitor lot-B.

*\*Please note that there are no sessions for families during Leadership Adventure.*





# CHRISTOPHER NEWPORT UNIVERSITY

## CAMPUS MAP

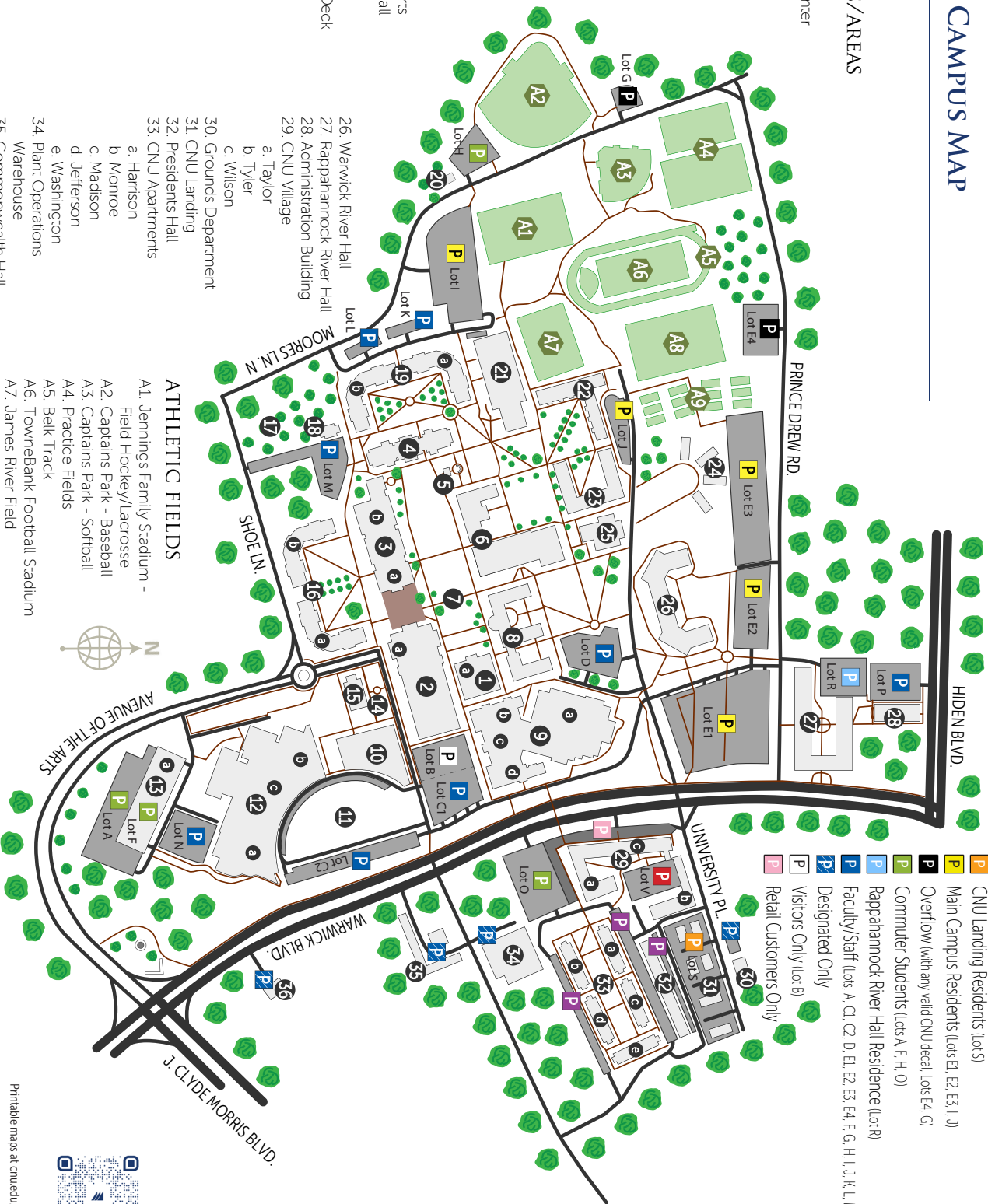
### CAMPUS BUILDINGS/AREAS

1. Christopher Newport Hall
    - a. Admission Welcome Center
  2. Triple Library
    - a. Einstein's Cafe
  3. David Student Union
    - a. Captains Locker
    - b. Regattas
  4. McMurrin Hall
  5. Hoinkes Pazar/Bell Tower
  6. Forbes Hall
  7. Great Lawn
  8. Luter Hall
  9. Freeman Center
    - a. Field House
  - b. Gaines Theatre
  - c. Treshmann Health and Fitness Pavilion
  - d. Windsor Health and Counseling Center
10. Mary M. Torgler Fine Arts Center
  11. Ferguson Field
  12. Ferguson Center for the Arts
    - a. Diamondstein Concert Hall
    - b. Peebles Theatre
    - c. Studio Theatre
  13. Ferguson Center Parking Deck
    - a. Parking Services
  14. Saunders Plaza
  15. Pope Chapel
  16. York River Hall
    - a. East
    - b. West
  17. Walker's Green
  18. Rich Alumni House
  19. Potomac River Hall
    - a. North
    - b. South
  20. Military Science Building
  21. Ratcliffe Hall
  22. James River Hall
  23. Santoro Hall
  24. Greek Village
  25. Hidden-Hussey Commons

26. Warwick River Hall
27. Rappahannock River Hall
28. Administration Building
29. CNU Village
  - a. Taylor
  - b. Tyler
  - c. Wilson
30. Grounds Department
31. CNU Landing
32. Presidents Hall
33. CNU Apartments
  - a. Harrison
  - b. Monroe
  - c. Madison
  - d. Jefferson
  - e. Washington
34. Plant Operations Warehouse
35. Commonwealth Hall
36. University Police

### ATHLETIC FIELDS

- A1. Jennings Family Stadium - Field Hockey/Lacrosse
- A2. Captains Park - Baseball
- A3. Captains Park - Softball
- A4. Practice Fields
- A5. Belk Track
- A6. TowneBank Football Stadium
- A7. James River Field
- A8. Captains Field - Soccer
- A9. Eyre Tennis Courts



### PARKING KEY

- East Campus Only
- CNU Village Residents (Lot V)
- CNU Landing Residents (Lot S)
- Main Campus Residents (Lots E1, E2, E3, I, J)
- Overflow (with any valid CNU decal, Lots E4, G)
- Commuter - Students (Lots A, F, H, O)
- Rappahannock River Hall Residence (Lot R)
- Faculty/Staff (Lots A, C, D, E1, E2, E3, E4, F, G, H, I, J, K, L, M, N, O, P)
- Designated Only
- Visitors Only (Lot B)
- Retail Customers Only



Printable maps at [cnu.edu/parking](http://cnu.edu/parking)

Updated: 10/2023



# TABLE OF CONTENTS

## 8 LETTER FROM STUDENT DIRECTORS

---

- 9. Orientation Leaders
- 10. Crew Leaders
- 12. Save the Dates
- 13. President's Parent Council
- 14. Our Core Values
- 16. History of CNU
- 18. Inclusion and Belonging
- 19. Freedom of Speech

## 20 ACADEMIC ESSENTIALS

---

- 22. Areas of Study
- 24. Core Curriculum
- 25. Tips from the Provost
- 26. Office of the Registrar
- 27. Faculty Core Advisers and Learning Communities
- 28. Center for Student Success
- 29. Honors Program
- 29. President's Leadership Program

## 30 PILLARS FOR SUCCESS

---

- 32. Center for Career Planning
- 33. Study Abroad
- 34. Center for Community Engagement
- 34. Research and Creative Activity

## 35 STUDENT LIFE

---

- 36. Student Affairs and Disability Support Services
- 37. Health and Wellness Services
- 38. Orientation and Student Involvement
- 39. Find Your Community
- 40. Residence Life
- 42. Athletics
- 44. Marching Captains
- 45. Recreational Services

## 46 STUDENT RESOURCES

---

- 47. Dining Services
- 48. Captain's Locker
- 49. Captain's Card
- 50. Emergency Management and University Police
- 51. Title IX and Equal Opportunity
- 52. Billing and Payment
- 52. Financial Aid
- 53. Information Technology Services
- 53. Parking and Transportation Services
- 54. Academic Terms
- 55. Campus Terms
- 57. Titles to Know
- 58. Notes Pages

# WELCOME HOME

We could not be more excited to welcome you to Christopher Newport University! We understand the thought and planning that went into choosing a college that is right for you, and we are incredibly thankful that you have chosen to join our community. Setting Sail plays an important role in the orientation process, as it aims to set you up for success by providing you the opportunity to learn all the important information about CNU before your move-in in August. Our orientation team has been looking forward to your arrival, and is eager to answer all of your questions and support you in this exciting journey!

Families, we acknowledge the crucial role you play in your student's life as you support them from afar. Throughout Setting Sail, we hope to provide you with resources and tools to assist your student as they become more independent. We encourage you to ask questions, take notes, and use this guidebook as a reference as you connect with other Captain families. In addition to these resources, we encourage you to stay up to date with "The Great Lawn" parent and family newsletter, visit your student, and attend our Family Weekend celebrations! "The Great Lawn" comes out every four to five months, and subscription is automatic if you submitted parent information during the application process. If you would like to receive these updates and are not yet enrolled, please email [register@cnu.edu](mailto:register@cnu.edu) and include your student's name and request a subscription.

Students, take advantage of all that happens in the next day and a half! We know this time may be overwhelming with the amount of information being thrown at you, but we encourage you to take it in as best you can. Take notes to look back on as you prepare for move-in come August. Step out of your comfort zone and meet your fellow Captains and most importantly, take ownership of your experience. Don't worry, your Crew Leaders will be a resource to you throughout the summer and are happy to answer any questions you may have or give you a refresher on any information covered. For now, get excited for everything that is to come. We are so happy to welcome you!

Although Setting Sail is only a day-and-a-half, orientation does not end there, as Welcome Week in August still awaits! Throughout the summer, don't hesitate to reach out to your Crew Leader and lean on them for advice and more insight on what life is like at CNU. In August, you will move in a week before everyone else; the campus is yours. Compared to Setting Sail, Welcome Week has spaced out events, similar to how a class schedule would be, with plenty of free time mixed in. This is your chance to become familiar with where things are, meet new people, and become comfortable with what your new home has to offer. Let's not get ahead of ourselves, though - today marks the beginning of your time at CNU and we cannot wait to see all the amazing things you will accomplish. Now, prepare to set sail and begin your new and exciting journey! We wish you the best of luck!

Go Captains!

**Student Directors of Orientation**



**ANNA LORENZ**

Major: Biology

Minors: Health and Medical Wellness and Psychology

Hello new Captains! The moment you were sent your acceptance letter, you became a Captain for Life. Years down the line, you will be telling friends about your college years, visiting your old residence hall, and thinking about those fond memories, but before we get there, you have to make the most of this experience. The best advice I can give you is to first, be yourself, and second, do as much as you can. Say "yes" to everything and talk to everyone! This really is a once-in-a-lifetime opportunity. Don't waste it. You will find friends and be able to grow into a new identity that is ready for the world after college. You will be surprised how fast four years will feel.



**ABBY PLAIA**

Major: Cellular, Molecular and Physiological Biology

Minors: Leadership Studies and Chemistry

Welcome to your new home, fellow Captains! The next few years of your life are going to be packed with so many new experiences and opportunities. Take advantage of them and learn from them; but don't forget to ask for help. You are lucky to be surrounded by so many individuals that care about your success and personal interests. Use your time here to push yourself and grow, so that when you step out into the world, you can be proud of yourself and confident in the person you have become. I am beyond excited to watch you thrive in your new journey here at CNU!



**PARKER VESS**

Major: History

Minors: Museum Studies and Geography

Welcome home, Captains! Our campus is truly a special place, and it is ready to greet you with open arms and a loving spirit. This spirit is embodied by every student, professor, and staff member here, and they are ready to invest in and support you! Talk to everyone; you never know what opportunities, lifelong friendships, and connections you should make. Use these interactions to grow and become the best leader, student, and person you can be. Don't forget to take time for yourself and explore the Newport News area; it is truly beautiful. This will end up being the best four years of your life, and we cannot wait to watch you get started!

# CREW LEADERS





Crew Leaders serve as the initial guides on campus at Setting Sail and Welcome Week, and are available as a resource throughout freshman year. During Welcome Week, Crew Leaders will build a sense of community on campus for first-year students and ensure they are confident in the event schedule. Through large and small group facilitations, as well as sessions to learn about resources on campus, Crew Leaders provide directions for incoming students as they begin to chart their own course.

MOVE IN  
**AUGUST 17-18**

WELCOME WEEK  
**AUGUST 18-24**

FAMILY WEEKEND  
**SEPTEMBER 13-15**

FALL BREAK  
**OCTOBER 12-15**

HOMECOMING  
**OCTOBER 18-20**

**SAVE  
THE  
DATES**

# PRESIDENT'S PARENT COUNCIL

**Welcome! We are excited your family has joined the Christopher Newport University community, and we hope you will consider becoming a member of the President's Parent Council.**

The President's Parent Council is the leadership giving society for families. Our parents direct their support to the programs, teams and departments they care about most, to scholarships, or make unrestricted gifts, which are used for the areas of greatest need. President's Parent Council members are engaged families who have a special passion for this wonderful place and want to share and support their Captain's journey. As a member of the President's Parent Council, you receive benefits throughout the year for your support of CNU. We hope you will join our President's Parent Council and look forward to meeting you.

Sincerely,

**Mary-Margaret Wells**  
Director of Parent Giving and Athletic Giving

**Jillian Knight**  
Annual Giving Associate



## **CARL AND NICKI JONES**

“Being members of the President's Parent Council has been a wonderful experience and fun way for us to continue to be involved with our children's school experiences by contributing directly to the departments that interest them the most. We have enjoyed benefitting multiple University programs, getting to know the CNU leadership team, and connecting with other parents who are on the same journey to becoming ‘Captain Parents for Life.’”

**Springfield, VA**  
**Parents of Colin '22 and Audra '26**

# OUR CORE VALUES

Christopher Newport University is maintained and governed by the following four values:

1. Honor
2. Leadership
3. Scholarship
4. Service

We hold the ideal of honor as an important element of the Christopher Newport University experience and the University has implemented policies that reinforce these values and ideals.





# HONOR CODE

**“On my honor, I will maintain the highest standards of honesty, integrity and personal responsibility. This means I will not lie, cheat or steal, and as a member of this academic community, I am committed to creating an environment of respect and mutual trust.”**

Every incoming student will be asked to recite and formally sign the Honor Code at the Community of Scholars Convocation in front of faculty, alumni and others. This tradition formally welcomes new students, underscores the seriousness of our shared academic purpose, and emphasizes the importance we place on living in a community of honor. Students receive a penny for luck and also as a symbol of their continual commitment to a life of honor. Then, during their commencement experience, graduates toss their pennies into the Saunders Fountain.



# IT WASN'T ALWAYS LIKE THIS

## A brief history of Christopher Newport

You will learn so much about your future in your first days as a college student. Take a moment to also learn about the past at Christopher Newport because it shapes how you will live and learn here.

Your University is young, as colleges go. CNU was founded in 1960 as a two-year branch of the College of William & Mary and was initially known as Christopher Newport College (CNC). Classes were held in an old building in downtown Newport News and most of the students were from the local area. As the college came to life, the City Council wanted to find a permanent location for the University and focused on a tract of land along Shoe Lane. Racial segregation in public schools and neighborhoods was still common at the time. CNU historian Dr. Phil Hamilton of the History Department shared the following perspective from his research on our community: “(The 60 acres) were owned by a small community of African Americans. Thus many Blacks across the Peninsula thought the City Council was attempting to use the college as a way to remove these Black landowners and halt further African American migration into this section of town.”

In spite of strong opposition from Black residents then living along Shoe Lane, the city utilized eminent domain and deeded the land to William & Mary. The campus grew and took shape on that land and adjacent property. You can still find several houses and a few families with ties to the old Shoe Lane neighborhood along the border of the campus and one family's home is actually on the backside of campus near Greek Village. CNU grew rapidly, opening its first residence hall in 1994 and acquiring Ferguson High School in 1995, which is now home to the Ferguson Center for the Performing Arts.

CNU historian Dr. Sean Heuvel says there was a massive building boom on campus during President Paul Triple's tenure in the late 1990s and early 2000s. The Freeman Center and residence halls opened. Most students lived on campus and they came from all regions of Virginia as CNU emerged as a nationally recognized, residential liberal arts university.

Recent media coverage of the early days of the University has spurred new efforts, led by President Kelly, to understand our history and the growth of the University on Shoe Lane and to discern its impact today.

Here is how President Kelly responded to a reporter's question about Shoe Lane and CNU:

“We want to learn and understand the University's full history. As we examine our past, we seek to contribute to the future of Virginia and Newport News, our hometown that we cherish. We want to be our Hometown University while ensuring we welcome a diverse array of students from across the Commonwealth and we will work to increase our population of out of state and International students as well.”

As a Captain, please consider helping strengthen the connection between the university and the city. You can do that through service to the community, through a respect for the current residents of Shoe Lane, and a deeper understanding of our history.

**If you would like to learn more about these events, see Dr. Hamilton's article, “Race, Politics, and Education in Tidewater Virginia: Christopher Newport College and the Shoe Lane Controversy of 1960-63,” Virginia Magazine of History and Biography, Vol. 119, No. 3 (2011): pp. 244-275.**



# INCLUSION AND BELONGING

The Christopher Newport University community engages and respects different viewpoints, understands the cultural and structural context in which those viewpoints emerge, and questions the development of our own perspectives and values, as these are among the fundamental tenets of a liberal arts education. Accordingly, we affirm our commitment to a campus culture that embraces the full spectrum of human attributes, perspectives and disciplines, and offers every member of the University the opportunity to become their best self.

Understanding and respecting differences can best develop in a community where members learn, live, work and serve among individuals with diverse worldviews, identities and values. We are dedicated to upholding the dignity and worth of all members of this academic community such that all may engage effectively and compassionately in a pluralistic society.

**Vidal Dickerson is our Chief Diversity, Equity and Inclusion Officer. He, in collaboration with students, faculty, staff, alumni and the broader community, works to uphold the University's statement and the goals associated with it. Through campus programming, education and training, service and research, and community partnerships, CNU cultivates a respectful and engaging learning and working environment where each community member feels valued and connected.**



For more information, email [diversity.inclusion@cnu.edu](mailto:diversity.inclusion@cnu.edu) or visit [cnu.edu/diversity](http://cnu.edu/diversity).



Christopher Newport University educates students to be responsible citizens living lives of significance. An essential element of this education is the development of independent judgment. The acquisition of independent judgment requires that students be both required and encouraged to inquire deeply into old and new ideas alike. Students must learn how to subject ideas to the crucible of rigorous discussion and debate, and have their own ideas confronted with the same rigorous examination.



## FREEDOM OF SPEECH AND EXPRESSION



Free inquiry is at the core of liberal learning. It can only flourish where the freedom of expression is not only respected, but valued. As has been observed by others, “without a vibrant commitment to free and open inquiry, a university ceases to be a university.”

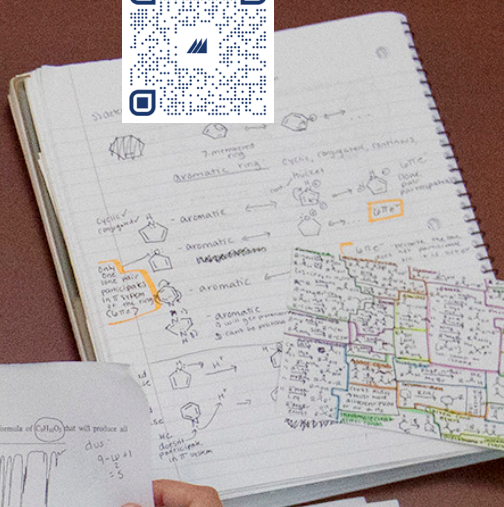
Please scan the QR code for the full university statement on free speech and expression.



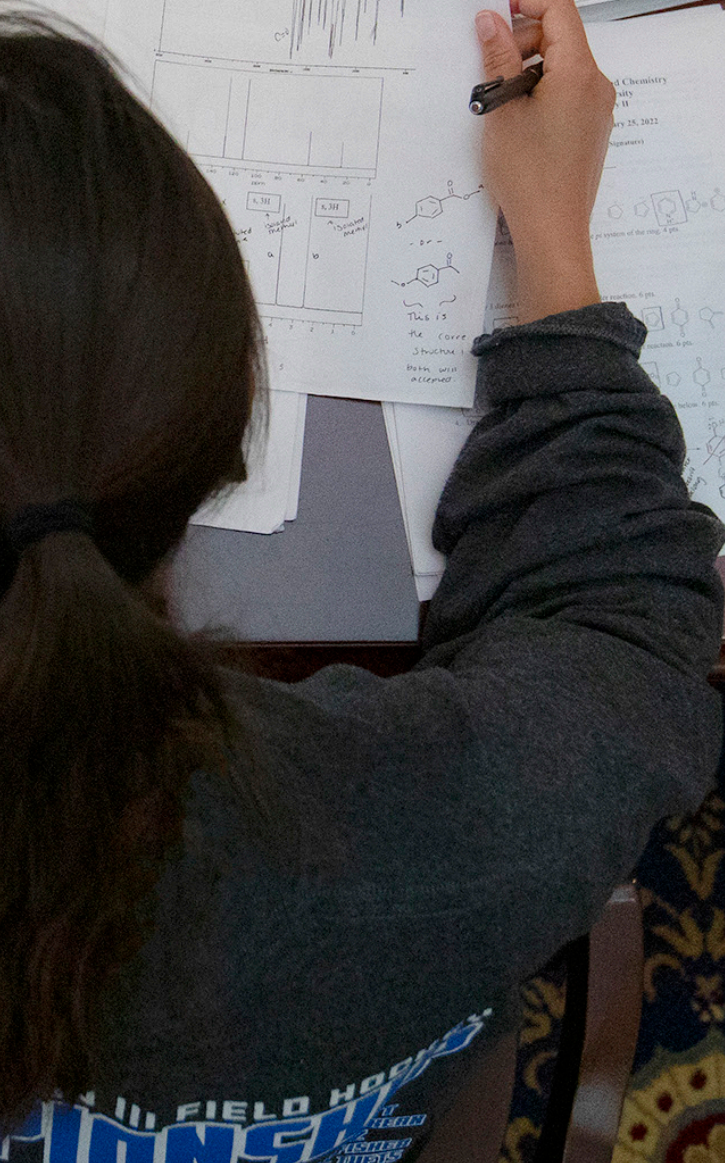
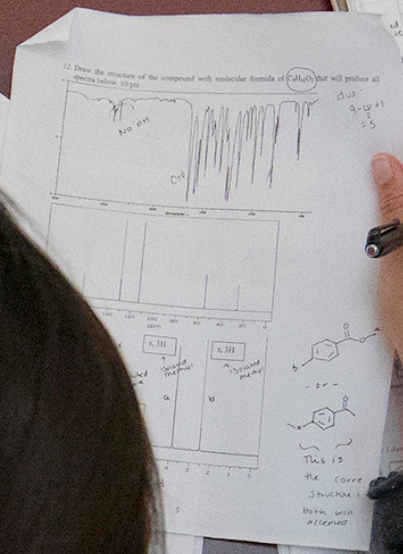
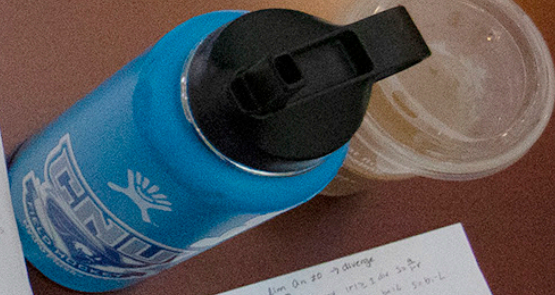


# ACADEMIC ESSENTIALS

Christopher Newport's approach to the liberal arts and sciences is unique. Our comprehensive program of study develops students' capacities of empowerment, knowledge and responsibility. All coursework — whether in the liberal learning core, the major fields, or in electives or courses taken for a minor — seeks to introduce, reinforce and advance one's aptitude in these primary capacities.



1st term 10/20 → change  
+ Geometry  
2nd term 11/21 → change  
+ Organic Chem (2 courses) → 1st & 2nd  
1st term 10/20 → change  
+ Geometry  
2nd term 11/21 → change  
+ Organic Chem (2 courses) → 1st & 2nd



# ACADEMIC SCHOOLS AND COLLEGES

## COLLEGE OF ARTS AND HUMANITIES

 [cnu.edu/cah](https://cnu.edu/cah)

## COLLEGE OF NATURAL AND BEHAVIORAL SCIENCES

 [cnu.edu/cnbs](https://cnu.edu/cnbs)

## LUTER SCHOOL OF BUSINESS

 [cnu.edu/business](https://cnu.edu/business)

## COLLEGE OF SOCIAL SCIENCES

 [cnu.edu/css](https://cnu.edu/css)

## GRADUATE STUDIES

 [cnu.edu/graduate](https://cnu.edu/graduate)

 [cnu.edu/academics](https://cnu.edu/academics)



# AREAS OF STUDY

CNU.EDU/ACADEMICS

- Accounting
- African American Studies
- American Studies
  - Constitutional Studies
  - Humanities
  - Social Science
- Anthropology
- Applied Physics
- Art History
- Biochemistry
- Bioethics
- Biology
  - Biology – Cellular, Molecular and Physiological
  - Biology – Integrative
  - Biology – Kinesiology
  - Biology – Organismal and Environmental
- Business Administration
- Chemistry
  - Childhood Studies
  - Child Life
  - Chinese Studies
  - Civic Engagement and Social Justice
- Classical Studies
- Communication
  - Computer Engineering
- Computer Science
- Criminology
- Cybersecurity
  - Dance
  - Data Science
  - Digital Humanities
  - Discrete Mathematics
- Economics
  - Mathematical Economics
  - Economic Policy
  - International Economics
- Elementary Education (PreK-6)
- Electrical Engineering
- English
  - Literature
  - Writing
- Environmental Studies
- Film Studies
- Finance
- Forensic Science
- French
  - Global Commerce and Culture
- German
  - Geography
  - Greek Studies
  - Health, Medical and Wellness Studies
- History
  - Human Rights and Conflict Resolution
  - Information Science
  - International Affairs
  - International Culture and Business
  - Journalism
  - Judeo-Christian Studies
  - Latin
  - Latin American Studies
- Leadership Studies\*
- Linguistics
- Literature
- Management
- Marketing
- Mathematics
  - Mathematics – Computational and Applied
    - Biology and Life Sciences
    - Economics
    - Electrical Engineering
    - Physics and Engineering
- Medieval and Early Modern Studies
- Middle East and North Africa Studies
- Military Science (ROTC)
- Museum Studies
- Music
  - Performance
  - Composition
  - Music Studies
  - Creative Studies
  - Pre-Certification: Choral
  - Pre-Certification: Instrumental
- Neuroscience
- Philosophy
  - Pre-Seminary Studies
  - Studies in Religion
- Philosophy and Religion
- Philosophy of Law
- Political Science
- Psychology
  - Social Work
- Sociology
  - Spanish
- Studio Art
  - 2D and 3D Media
  - Graphic Design
  - Photography and Video Art
- Theater
  - Acting
  - Arts Administration
  - Design/Technical Theater
  - Directing/Dramatic Literature
  - Musical Theater
  - Theater Studies
- U.S. National Security Studies
- Women, Gender and Sexuality Studies
- Writing

---

## ADVISING TRACKS

Pre-Law  
Pre-Med and Pre-Health

## BACHELOR'S TO FIVE-YEAR MASTER'S PROGRAMS

Applied Physics and Computer Science  
Environmental Science  
Teaching

## GRADUATE STUDY

Financial Analysis

## CERTIFICATE PROGRAM

Data Analytics for the Social Sciences  
Undergraduate Certificate in Research and Creative Activity

● Major ● Minor ● Concentration \*Approved as a second major only

# THE CORE CURRICULUM

All students must earn 120 credit hours and a minimum of a 2.0 overall and major GPA to graduate.

Within the 120 credit hours, students will:

- Earn a minimum of 40 credits by completing Liberal Learning Foundation and Area of Inquiry courses
- Earn an average of 36 credits by completing a major
- Earn approximately 44 credits by completing a minor (or minors), a second major, and/or electives

The Liberal Learning Core Curriculum consists of Liberal Learning Foundation courses and Liberal Learning Areas of Inquiry courses.

## LIBERAL LEARNING FOUNDATION:

Introduces students to the expectations and habits of mind that are hallmarks of University life, and provides the fundamental tools necessary for advanced engagement in ideas.

- **Economic modeling and analysis**
- **Logical reasoning**
- **Mathematical literacy**
- **Second language literacy**
- **Written communication literacy**

## LIBERAL LEARNING AREAS OF INQUIRY:

Allows students to explore and experience the breadth of liberal learning in the following areas:

- **Creative expressions**
- **Civic and democratic engagement**
- **Global and multicultural perspectives**
- **Investigating the natural world**
- **Western traditions**

## UNDERSTANDING YOUR FIRST SEMESTER SCHEDULE: How and Why Do We Calibrate Student Schedules?

Each student's class schedule is carefully crafted based on their area of academic interest, Living and Learning Community preferences, and Liberal Learning Foundation and Area of Inquiry preferences while considering the student's:

- Application for admission
- Dual-enrollment transcript
- Self-reported Advanced Placement, International Baccalaureate or Cambridge credit scores and/or anticipated credit
- Interest in Christopher Newport's five-year bachelor's to master's programs, pre-law, pre-health, ROTC and/or marching band
- Membership in the President's Leadership Program, Honors or Pre-Med Scholars Programs
- Participation in fall NCAA sports

An extensive quality assurance process helps guarantee students start on an academic path to graduation in four years. We also strive to ensure students have an evenly spaced-out schedule so there is time for meals, studying, sleeping and participation in co-curricular activities. In addition, we realize students may change their minds about an area of academic interest before classes begin and may need to change their schedules. Therefore, we work closely with them to ensure any required schedule changes are smooth and the student still remains on a path to graduate in four years.

# TIPS FROM THE PROVOST

Dear students,

**I've been on a college campus for 36 years, 27 of them as a professor at Christopher Newport, and during that time, I've advised hundreds and hundreds of students. I've always characterized one's undergraduate years as a journey down a road. When one starts the journey, the end goal is not always in sight, but as the first year becomes the second and then the third, the end goal begins to appear. As you begin this journey, whether your end goal is clear or not, here are some tips that will make the journey more successful and more meaningful.**

## Academically

- Go to class - A huge chunk of what a professor wants you to learn is discussed in class. The readings are often discussed and explained in class. Lab assignments or creative activities are conducted in class.
- Find your place in the library - The library is the nerve center of the University. It is where much of the knowledge that you will need to access is organized, but it is also a great place to study.
- Get to know your professors - Always go introduce yourself to your professors. Visit their office hours, or, at a minimum, introduce yourself at the end of a class. Not only are your professors teaching you, but they are always a valuable resource for ideas, recommendation letters, and research opportunities.
- Ask questions - If you are regularly attending class, it is very likely that you will have questions, and you should never leave a class with a question that you didn't ask. Either ask during class or wait until the end and ask. It is amazing the doors (to knowledge and opportunities) that asking a question can open.
- Don't take the easy road - You are in college to learn, so learn! Don't take the easy class just because you can. You grow as a person as you learn to navigate challenges.
- Don't study at the last minute - There is overwhelming evidence that studying at the last minute does not work over the long term. You may do well enough on any given exam, but you will not do so consistently, and you will not retain as much.

## Socially

- Make friends - This is a time of transition for you into adulthood. You have the opportunity to make friends who could very well be in your life for the rest of your life.
- Embrace the diversity around campus - You are likely to experience new and different things, be they people, activities, customs, issues, or environments. This is a good thing. The world is full of differences, and you will need to be able to navigate them as an adult.
- Enjoy - You are about to start the college experience. Have fun! The four (or five) years you spend at Christopher Newport

## Personally

- Use your time as an undergraduate student doing both harvesting and investing activities. A harvesting activity is one where you pursue something you already know you love and/or excel in. You may already play the piano, and want to play it more and better, for example. An investing activity is one where you try something completely new, and in doing so, you take a risk. You may discover a new talent, passion or hobby. Or, you may discover a dead end. Either way, you grow as a person.

Sincerely,



Quentin Kidd

# OFFICE OF THE REGISTRAR

## The Office of the Registrar is responsible for the following:

- Maintenance and protection of student educational records
- Interpretation and implementation of academic policies and federal and state regulations
- Production of academic transcripts, grade reports, enrollment verification and certification
- Analysis of student degree progress
- Certification of degree requirements for degree conferral
- Facilitation of course registration to include the development and maintenance of the schedule of classes
- Interpretation and implementation of policies and procedures to facilitate compliance with the Family Education Rights and Privacy Act (FERPA)
- Verification of students' Certificates of Immunization
- Facilitation of approved academic accommodations for students
- Certification of students for educational benefits under the U.S. Department of Veterans Affairs



### The Transfer Center

Evaluation and awarding of credit  
for the following:

Advanced placement

International Baccalaureate

Cambridge examinations

College-Level Examinations Program

High school dual-enrollment coursework

[transfer@cnu.edu](mailto:transfer@cnu.edu) | (757) 594-7296

# FACULTY CORE ADVISING

All first-year students are assigned a Faculty Core Adviser who assists them in their first two years as they find their place in our community of learning and discern their academic trajectory through academic exploration and course registration for their first few semesters. Core Advisers serve as a primary resource for students to become aware of opportunities, resources, and tools as they learn to navigate academic and co-curricular opportunities to engage their learning. Students are encouraged and expected to take personal responsibility in cultivating their curiosities and exercising ownership of their academic exploration as they plan their coursework and engage professionally in the advising relationship.

## When do students meet with their Faculty Core Adviser?

Students can expect to receive communication from their Faculty Core Adviser over the summer prior to the start of fall classes. During Welcome Week, they'll meet with their Core Adviser in a group as well as individual setting. In week five (mid-September), students will meet with their Core Adviser to discuss their college transition, academic performance, and opportunities and resources. They will check in again following midterms and in important preparation for their week 10 advising meeting, to which students are responsible for bringing a prepared course plan to discuss before spring class registration. During the following spring (of their sophomore year), once students have declared a major, they will be assigned to a new adviser within their major field of study.

## How to Support your Student through the Advising Process

Encourage them to (1) be proactive in familiarizing themselves with the undergraduate catalog (their areas of interest and associated degree requirements), (2) bring their honest questions, (3) use their core adviser as a resource as they find their way, and (4) practice professionalism and transparency as they engage the advising relationship through email communication and in-person meetings. Your student's information is protected by FERPA, rendering their Core Adviser unable to discuss details with anyone other than your student. As such, encourage your student to engage in attentive communication with their Core Adviser.

## LIVING AND LEARNING COMMUNITIES

For the fall semester, every first-year student is enrolled in a Living and Learning Community (LLC) designed to give students a strong start to their college experience by living in close proximity in their residence hall as well as sharing similar academic courses within the liberal learning core curriculum with a group of 16-20 students. These students have the opportunity to build community as they transition into college and share access to various support resources toward their academic success.

For more information on learning communities, contact Lori Throupe, Faculty Director of Academic Success, at [lori.throupe@cnu.edu](mailto:lori.throupe@cnu.edu) or (757) 594-8919.

# CENTER FOR STUDENT SUCCESS

**The transition to college academics can be a challenging adjustment. Using a holistic approach that fosters independent learning, we help students identify obstacles or challenges to academic success, develop strategies to overcome them, and provide support systems and resources.**

The Center for Student Success helps students through one-on-one success coaching, subject area peer tutoring, group test reviews and study skills programming. In addition to these resources, we also offer programs for specific groups of students, including: the Captains Launch transition program for incoming students, student-athlete academic success programming, and first-generation college student initiatives. Each of these programs helps to ensure students are supported and ultimately develop strategies for continued success in college.

For more information on resources and programs offered by the Center for Student Success, reach out to [studentsuccess@cnu.edu](mailto:studentsuccess@cnu.edu) or **(757) 594-7684**.



## Alice F. Randall Writing Center

Housed within the Center for Student Success, the Alice F. Randall Writing Center offers a number of services, including helping to brainstorm ideas, organizing rough drafts, developing thesis statements and revising a final draft. After training for a semester in a writing-intensive class, our consultants can help students with any writing from across the disciplines and at any point in the writing process. We offer three different ways to get writing assistance:

- In-person tutoring in Christopher Newport Hall 124
- Online synchronous tutoring using Google Meet
- Asynchronous tutoring, where a writing consultant will provide written feedback within 24 hours of receiving it

**For more information, contact [wcenter@cnu.edu](mailto:wcenter@cnu.edu).**



# HONORS PROGRAM

The Honors Program is designed to help enhance students' educations and help them get the most out of college. Being in the Honors Program removes a large portion of the Liberal Learning Curriculum courses, so students should avoid unintentionally enrolling in courses they don't need. In addition to the special coursework and freedom to customize their curriculum, students are eligible for scholarships, special research and study abroad opportunities, funding for conference travel, priority housing and registration, and much more. During their first year, students in the Honors Program are housed in learning communities according to their Honors seminars.

If students are not accepted into the Honors Program before the start of their freshman year, they are able to apply again once their first semester is completed. Students can easily complete both the Honors Program and the Leadership Minor and graduate in four years or less. For any questions regarding the Honors Program, contact Dr. Jay Paul at [jpaul@cnu.edu](mailto:jpaul@cnu.edu).

# PRESIDENT'S LEADERSHIP PROGRAM

The President's Leadership Program (PLP) is a four-year leadership education experience that empowers students to recognize their leadership potential and develop personal and social responsibility for the betterment of self and society. While selection for PLP takes place during the admission process, the majority of events hosted by the program are open to all students.

For more information on the President's Leadership Program, contact [preslead@cnu.edu](mailto:preslead@cnu.edu) or (757) 594-7207.



# PILLARS FOR SUCCESS





**At Christopher Newport, we encourage students to explore meaningful co-curricular involvement that will amplify their academic accomplishments. Our four Pillars — internships, undergraduate research, service and study abroad — are solid supports that will help students gain vital real-world experience along the way to becoming an engaged citizen and leader.**

# CENTER FOR CAREER PLANNING

The Center for Career Planning (CCP) is excited to help our newest group of students make a plan for success both during their time at Christopher Newport and after graduation.

## How does the Center for Career Planning support students?

Our office provides lifelong career exploration and preparation services. We support students in deciding on a major, learning about occupations, finding on-campus jobs, writing a resume, etc. to land the perfect internship, career or graduate school acceptance. We provide information, advice and resources through individual appointments, workshops and panels while also hosting job and internship fairs, employer/graduate school information and recruiting sessions and campus interviews.

## How do students apply for on-campus jobs, explore opportunities and make appointments?

All students have access to our Handshake at CNU platform, where they can connect with employers, find internship and job opportunities, explore career preparation resources and events, and schedule appointments with the Center for Career Planning. Students can access their Handshake account through the myLinks section of myCNU.



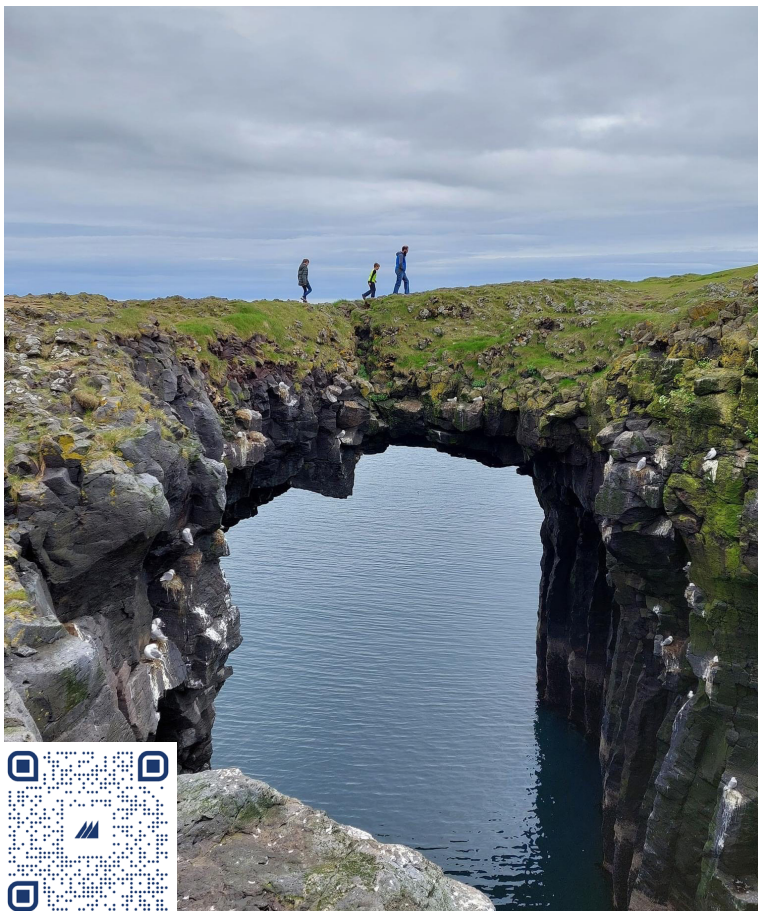
# STUDY ABROAD

Studying abroad can be a life-changing experience. Every student can find an opportunity that fits their goals; someone from every major has studied abroad. Students can travel in groups with faculty leaders, attend a University overseas or study alongside other U.S. students in a foreign country. Students can take courses for their majors, minors, core and Areas of Inquiry or elective credits. For specific locations, students may need to consider some courses outside of their majors; however, by remaining open to completing non-major requirements, students can gain flexibility for when, where and how long they stay.

## When can students study abroad and how much does it cost?

Students can study abroad in the summer or during the fall or spring semesters. Often, the cost of study abroad can be a concern for students and families. We offer study abroad scholarships to degree-seeking undergraduate students and there are many academic departments that also have funding opportunities for majors and/or minors. Additionally, there are scholarship benefits for students in the President's Leadership and Honors programs, which allow them to apply for funding for study abroad trips.

For more information on studying abroad, contact us at [studyabroad@cnu.edu](mailto:studyabroad@cnu.edu) or (757) 594-8083.



# CENTER FOR COMMUNITY ENGAGEMENT

Christopher Newport's Center for Community Engagement (CCE) is dedicated to inspiring, equipping and mobilizing students to engage in and positively transform our communities in healthy and impactful ways. We do this by establishing long-term relationships among students, faculty and community partners focused on positive social, economic and civic change. We encourage all students to "Know, Love and Serve" their new community. This means helping them get to know Newport News, enjoy all their new home has to offer and care for the local community and their new "neighbors" for the next four years.

## How do students get connected to a service site?

We offer multiple service tracks so students have the ability to commit to service opportunities in an area of interest and we have student staff ready to help their peers find the right volunteer site! Come graduation, students can graduate with Service Distinction or Service Distinction Leader honors, which means they've completed a set number of hours prior to their graduation.

**For more information, contact [cnuengage@cnu.edu](mailto:cnuengage@cnu.edu) or (757) 594-7233.**



# STUDENT RESEARCH AND CREATIVE EXPRESSION

The Office of Research and Creative Activity (ORCA) facilitates research and creative opportunities that put classroom coursework and academic theory into practice. We provide multiple programs for students to apply their education first hand, such as our Research Apprentice Program and Summer Scholars. ORCA programs pay students while doing research. We can also help students build their research skills into a portfolio, making them more attractive candidates for research and creative positions, through our Passport to Research program. In addition to the programs we offer, students are able to apply for independent research grants to support their projects or travel funding to present or conduct research and creative activity off campus.

## Are there opportunities for students to present their research?

In addition to helping students pursue research and creative activities, we also offer opportunities for students to share their findings. Each April, we host an annual on-campus conference, Paideia, to highlight student research across the liberal arts and sciences. We also have an undergraduate peer-reviewed research journal, "The Cupola," that honors and promotes outstanding student research papers. The opportunities to get involved in research and creative activity are abundant!

**For more information, visit our website or contact us at (757) 594-8586.**



# STUDENT LIFE



# STUDENT AFFAIRS

**The Division of Student Affairs is staffed by professionals working in the areas of Orientation and Student Involvement; the President’s Leadership Program; the Office of Residence Life; the James C. Windsor Center for Health and Counseling Services; and the Center for Honor Enrichment and Community Standards (CHECS). Student Affairs also serves as a starting point for students with qualified disabilities.**

These areas work collaboratively to support the academic mission of the University, facilitate student success and engagement, provide enrichment, and foster the opportunity to interact socially in several hundred activities offered annually. These co-curricular opportunities connect classroom learning to out of classroom experiences, promote growth and development, and facilitate greater involvement with the community at large.

## ACCESSIBILITY AND ACCOMODATIONS

There are core elements to the liberal arts and sciences experience essential to a Christopher Newport University education. To graduate from Christopher Newport, all students must demonstrate proficiency in logical reasoning through abstract thinking, written communication literacy, second language literacy, mathematical literacy and economic modeling and analysis. While these requirements cannot be waived, students who have disabilities that may present challenges in these areas will be reasonably supported in meeting these requirements.

### **What should students with disabilities do to receive accommodations?**

Students with disabilities may consult with Student Affairs before or during their active enrollment at Christopher Newport. New students, especially freshmen, will want to contact the office well before beginning their first semester if accommodations are required. Students who request accommodations by the University must formally declare their disability by completing a form obtained from Student Affairs. A follow-up meeting with the Director of Student Accessibility is also recommended.

# HEALTH AND WELLNESS SERVICES

**University Health and Wellness Services (UHWS) is the on-campus health clinic, where staff can assist with sick care and wellness needs. The office is open when classes are in session during the fall and spring semesters. Connected to the Riverside Health System, UHWS provides access to registered nurses, nurse practitioners and physicians who provide care and educational programs to students. There is a \$20 fee for appointments with the nurse practitioners and the family practice resident.**

## **Where do students submit their immunization documentation?**

The Code of Virginia (section 23-7.5) requires students to provide documentation of required immunizations signed or stamped by a licensed health professional or facility. All first-time, full-time undergraduate and graduate students attending Christopher Newport must complete the Certificate of Immunization. Failure to do so will result in inability to register and attend the next semester. Immunization records should be sent to the Office of the Registrar.



# THE OFFICE OF COUNSELING SERVICES

The Office of Counseling Services provides a range of free services to address the mental health needs of the student body and University community. Specifically, we offer the following:

- Individual and group counseling for students
- Consultation with students, faculty and staff, and parents
- Outreach programming
- Crisis response

We are committed to maintaining a safe and comfortable place for students to talk about their concerns — a place where they can not only be understood and respected, but also encouraged and challenged. Our staff of dedicated mental health professionals is devoted to providing the highest quality of counseling services to the campus community.



# OFFICE OF ORIENTATION AND STUDENT INVOLVEMENT

The Office of Orientation & Student Involvement seeks to create a foundation of success for all students as they transition to and through Christopher Newport University. In addition to the planning and implementation of our formal orientation programs, we are here to support students as they find community on campus through involvement opportunities.





# FINDING YOUR COMMUNITY

## How do students get involved on campus?

We encourage students to get involved during their time at Christopher Newport. Whether through participation in one of our 200+ student organizations, an on-campus job, attendance at events, research with faculty or internships and volunteer opportunities in the community, there are many ways for students to become involved. We can help students connect with people and opportunities that will help them get involved in a meaningful and fun way.

## What types of student organizations are offered at Christopher Newport?

Students and families can check out The Compass, our database of organizations and campus events, for more information about different types of clubs on campus. From fraternities and sororities to cultural and identity-based organizations to music and performance, we offer a wide variety. Additionally, we encourage students to follow us on social media to learn about all the things you need to know based on your class year. Your class account will follow you from orientation through commencement, with information pertaining to where you are in your college experience.

# FRATERNITY & SORORITY LIFE

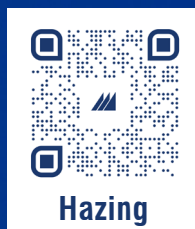
**The fraternity and sorority community comprises approximately 19% of the student body. Three different councils represent all of our fraternities and sororities. The councils exist to promote the need of, advocate for and govern the groups under them. The Interfraternity Council comprises fraternities, the College Panhellenic Council comprises only National Panhellenic Conference member sororities, and the National Pan-Hellenic Council (NPHC) is a collaborative organization of historically African American fraternities and sororities. All of our Greek chapters participate in service and philanthropic endeavors as well as social events, and provide leadership development to members of the organizations. A list of active chapters is available at [cnu.edu/life/greek/chapters](http://cnu.edu/life/greek/chapters).**

## When can students join a fraternity or sorority?

Students must complete at least 12 college credit hours, be enrolled fulltime and meet a minimum GPA requirement before being eligible for membership. Christopher Newport has a deferred recruitment model, therefore first-year students may not affiliate until at least their second semester at CNU. Transfer students may be eligible to join sooner. Additionally, NPHC organizations typically do not allow first-year students to affiliate due to national standards. These organizations host information sessions that are open to any interested student at which they review their requirements. Though first-year students cannot join in least their first semester, we still recommend they get to know our fraternity and sorority community prior to affiliation, as joining one of these organizations constitutes a lifetime commitment.



The Compass



Hazing

Christopher Newport University maintains and makes available reports of actual findings of violations of the institution's hazing policy and federal and state laws pertaining to hazing, to the extent the violations were reported to campus authorities. Scan the QR code for the report and further information.

# RESIDENCE LIFE

Living on campus is an important component of the Christopher Newport experience. We value providing a residential living and learning environment that supports student's academic journey in the liberal arts and sciences. Our three-year residency expectation provides housing options that offer a balance of support while encouraging independence. Students are assigned a room in Potomac River Hall North, Santoro Hall or York River Hall. These freshman residence halls feature suite-style units, set primarily as double-occupancy rooms with two rooms sharing a bathroom, with an academic year occupancy period running from August through April.

## ROOMMATE ASSIGNMENTS

Room and roommate assignments will be published in early August. Students will be notified via email with instructions. While living with friends from high school may be comforting, we encourage students to be open to new experiences. Roommates are strongly encouraged to contact one another before arriving on campus to make introductions and coordinate shared living arrangements. Remember, learning communities take precedence when making room assignments, and roommates are expected to show respect for one another's diverse values and identities.

 (757) 594-7756

 [housingadmin@cnu.edu](mailto:housingadmin@cnu.edu)



## HOW ARE FIRST-YEAR RESIDENCE HALL ROOMS FURNISHED?

Each student room will be fully furnished and comes with great amenities:

- Extra-long (80-inch) twin-width beds
- Desks and chairs (one per resident)
- Dressers (about three drawers per resident)
- Closet space or wardrobes
- Microfridge (microwave/refrigerator combo) shared among all residents in unit
- Wi-Fi available in the building



[cnu.edu/residencehalls](https://cnu.edu/residencehalls)

## WHAT DOES SUPPORT LOOK LIKE IN THE RESIDENCE HALLS?

In the residence halls, we have Resident Assistants (RAs) who are community builders who will help students transition to living on campus. RAs are students who are trained to help with most situations for residents, but we also encourage students to talk with their families about how they might handle an emergency should one arise. Our residents are also supported by Residential Fellows, a full-time professional staff living and working in the residence halls.

It is always helpful to be prepared for emergencies. Discuss your plans and your student's plans in case of an emergency. Check with your insurance company to determine if your student's belongings are covered. If not, **renter's insurance is highly recommended.**

Plan for breaks - residence halls are closed during Thanksgiving, winter and spring breaks. All residents must leave when the halls are closed.

Three common topics that come up for first-year students:

- Request a maintenance repair: Students can submit a work order online at [help.cnu.edu](https://help.cnu.edu) or notify the on-call staff in the event of an emergency repair need.
- Roommate conflict: Students should work with their RA or Residential Fellow for support navigating roommate conflicts.
- Meal plan changes: Students can change their meal plans until 5 p.m. on Friday during the first week of classes each semester.

## WHEN DO FIRST-YEAR STUDENTS MOVE IN?

First-year residence hall move-in will take place August 16-18, 2024. Move-in dates and times will be established in late July and information will be shared at [cnu.edu/life/housing/movein](https://cnu.edu/life/housing/movein).

For more information about University housing, contact [housingadmin@cnu.edu](mailto:housingadmin@cnu.edu) or **(757) 594-7756**.

For more information about Residence Life, visit our website [cnu.edu/reslife](https://cnu.edu/reslife) or contact us at [reslife@cnu.edu](mailto:reslife@cnu.edu) or **(757) 594-7527**.

**For additional resources, check out our website:** [my.cnu.edu/housing/resources](https://my.cnu.edu/housing/resources).



**Scan the QR code to access the University packing list**



# CAPTAINS ATHLETICS

## MEN'S SPORTS

Baseball  
Basketball  
Cross country  
Football  
Golf  
Indoor track & field  
Lacrosse  
Outdoor track & field  
Soccer  
Tennis

## WOMEN'S SPORTS

Basketball  
Cross country  
Field hockey  
Golf  
Indoor track & field  
Lacrosse  
Outdoor track & field  
Soccer  
Softball  
Tennis  
Volleyball

## COED SPORTS

Cheerleading  
Sailing  
Storm dance team

ONE OF THE NATION'S MOST SUCCESSFUL

# NCAA DIVISION III

PROGRAMS

**24** VARSITY  
TEAMS

**86** INDIVIDUAL & TEAM  
CHAMPIONSHIPS

**850+** ALL-AMERICANS

**TOP WINNING PERCENTAGE**  
NEARLY EVERY YEAR  
**AMONG ALL VIRGINIA SCHOOLS**

For schedules and the most up-to-date information, go to: [cnusports.com](http://cnusports.com)

# TICKET INFORMATION

## WHAT IS THE COST TO ATTEND ATHLETIC EVENTS?

Students get into any regular season home game for free with their student IDs. This allows them access to general admission seats and designated student sections. Guests can purchase football and basketball tickets through our ticket office located in the Freeman Center and online at [CNUSports.com/tickets](http://CNUSports.com/tickets). All other sports offer free admission for regular season home games. Any conference or NCAA tournament will have different rules and policies.


## FAMILY WEEKEND AND HOMECOMING

Seats and tailgating spots will sell out for these events. We encourage purchasing in advance for these games. There is a limited inventory, especially for certain sections, and the only way to ensure tickets or spots is to purchase a season packet.

## TAILGATING

At all home football games, certain parking lots are designated tailgate lots. Students with a student ID may purchase a tailgating pass in person through the Freeman Center ticket office the week of the game. Guests may purchase tailgating passes by calling the ticket office at **(757) 594-7880**.

For more information about tickets and tailgating, contact the athletic ticket office at **(757) 594-7880** or [sportix@cnu.edu](mailto:sportix@cnu.edu). For schedules and most up-to-date information, go to [CNUSports.com](http://CNUSports.com).

 **(757) 594-7880**

 [sportix@cnu.edu](mailto:sportix@cnu.edu)


# THE MARCHING CAPTAINS

The Marching Captains is a talented, vibrant and enthusiastic group. As the most visible music ensemble on campus, they perform at all home football games, events throughout Virginia and more. Members of the Marching Captains represent every major on campus, with the majority being non-music majors, and membership is open to all students. All Marching Captains receive college credit for their participation. For more information, visit [cnu.edu/marchingcaptains](https://cnu.edu/marchingcaptains)



Conductor Mark Johnson

 [mark.johnsona@cnu.edu](mailto:mark.johnsona@cnu.edu)

 (757) 594-8791

# RECREATIONAL SERVICES

**Recreational Services offers several opportunities to stay physically active and engage socially with peers, including intramural sports, sport clubs and outdoor adventure programs. Intramurals are played on campus between students and they are typically offered in the evenings on a weekly basis. Intramural sports are also a great opportunity for on-campus employment, as all of our officials used for intramurals are students.**

Sport clubs are student organizations that share a common interest in a particular sport and they typically practice and compete against other universities. Each club is student run, providing multiple leadership opportunities for students. Outdoor Adventure and Recreation (OAR) promotes interest and awareness of the outdoors by providing trips for students roughly two times each semester around Virginia and the Tidewater area.



# STUDENT SERVICES





# DINING SERVICES

We have two main dining halls on campus: Regattas and The Commons, and both are all-you-care-to-eat facilities. First-year students select either a 14-or unlimited meal plan through the Admitted Student System. As part of the meal plan, students also receive Dining Dollars, which can be used like a debit card for food purchases at dining halls and on-campus eateries.

## **How does Christopher Newport University support students with food allergies/accommodations?**

We identify the eight major food allergens at the point of service in both dining halls as well as offer numerous gluten-free, vegan and vegetarian options. Students with food allergies or specific dietary needs are encouraged to contact the Director of Dining Services to discuss options.

## **Where can students eat on campus besides the dining halls?**

We have a number of on-campus eateries around campus where students can use their Dining Dollars or Captains Cash. We encourage families and guests to take advantage of these options as well when visiting your student!

## **DAVID STUDENT UNION**

Chick-fil-A

Discovery Bistro - paninis, sushi

Discovery Grille - burgers, subs, sandwiches

Discovery Pizza

## **TORGGLER CENTER**

Palette Café - coffee, brunch, lunch

*\*Dining Dollars cannot be used at the Palette Café\**

## **TRIBBLE LIBRARY**

Einstein's Café - (we proudly brew Starbucks),  
coffee, tea, baked goods

More information on meal plan prices, dining hall hours and eating establishments can be found at:



[cnu.edu/life/dining/mealplans](https://cnu.edu/life/dining/mealplans)



(757) 594-8854



# CAPTAINS LOCKER

We are the official bookstore and spirit shop at Christopher Newport! Within the Captains Locker, you can find school supplies and Christopher Newport University clothing and gifts. All textbooks can be purchased through the Captains Locker website or accessed through CNU Live. The Captains Locker works closely with faculty and staff to ensure students receive the correct course materials. For more information on the types of books and online-only items, please visit [www.captainslocker.com](http://www.captainslocker.com). We encourage students to send their books to their home address or student mailbox.

For questions regarding textbooks, contact Kristen Allard at [k.allard@follett.com](mailto:k.allard@follett.com). For more information on non-textbook related matters, contact Sharolyn Meyers at [1245mgr@follett.com](mailto:1245mgr@follett.com).

# STUDENT MAILROOM

Located in the David Student Union, the student mailroom is dedicated to helping students living on campus send or receive mail and packages. We are open Monday-Friday from 8 a.m.-5 p.m. As the student mailroom is only open during the week, we encourage families not to send perishable items to students on the weekend! Students will need to pick up their mailbox key soon after moving in.



**Student Mailbox Address:**  
Student Legal First & Last Name  
1000 University Place  
Box Number XXXX  
Newport News, VA 23606

# CAPTAINS CARD

**The Captains Card is a student's ID card, which allows students access to their residence hall, room, dining plan, library resources and various funds, such as Dining Dollars and Captains Cash.**

## **DINING DOLLARS**

Dining Dollars come with your dining plan and are placed onto your Captains Card, which can be used for food and beverage purchases at dining halls and on-campus eateries.

## **CAPTAINS CASH**

Students, as well as family and friends, can deposit Captains Cash onto their Captains Card beginning August 7th. Captains Cash can be used to pay for a variety of items, such as food at on-campus and off-campus locations, laundry services, purchases in vending machines, and other services and products on campus.

As part of the Admitted Student System, incoming students will upload their photo. Doing this will allow us to print their Captains Card in advance so they can receive it on move-in day. Students who do not upload their photo to the system will be required to go to the DSU Welcome Desk prior to moving in to have their Captains Card printed.



# UNIVERSITY POLICE

In 2015, Christopher Newport University was the third campus in Virginia to be designated as a Certified Crime Prevention Campus by the Virginia Department of Criminal Justice Services (DCJS). Certified campuses must complete a reassessment process and meet specific benchmarks every three years to maintain certification.

University Police employs full-time, professionally trained, sworn and state-certified police officers as well as state-certified campus security officers to patrol campus 24 hours a day on foot, in vehicles and on bicycles. We offer a number of resources from anonymous crime reporting to drug and alcohol awareness to self defense programs. We also work closely with federal, state and local law enforcement partners to ensure community safety.

The Emergency Communication Center is located in University Police headquarters. Professionally trained and state-certified communications officers manage all emergency and non-emergency related calls, and dispatch first responders and other personnel to incidents and calls for service as appropriate.

## EMERGENCY MANAGEMENT

### How are students and families notified of campus emergencies?

In support of public safety, the Office of Emergency Management promotes individual, departmental and institutional preparedness and resilience via outreach and engagement with the University community and regional partners. We want students to know what to do in the event of an emergency on campus. Students and family members should sign up for CNU Alert, which is our official University emergency information platform that includes campus closings, delays, evacuations, etc.

#### Develop an emergency plan with your family

- Plan now to be prepared when it counts
- Register for CNU Alerts
- Have essential emergency supplies on hand
- Make a plan to communicate with family and friends



You can sign up for CNU Alert today at [cnualert.info](http://cnualert.info).

# TITLE IX AND EQUAL OPPORTUNITY

**Christopher Newport University is committed to providing an environment that emphasizes the dignity and worth of every member of its community and that is free from harassment and discrimination based on race, color, religion, sex, national origin, age, disability, genetic information, sexual orientation, gender identity, marital status, military/veteran status, political affiliation or any other status protected by law. Such an environment is necessary to a healthy learning, working and living atmosphere because discrimination and harassment undermine human dignity and the positive connection among everyone on campus.**

Any student who believes that they have been unlawfully discriminated against or harassed (which includes all forms of sexual misconduct), may file a report with Title IX.

For more information on resources, reporting options and procedures, and steps that can be taken by the University for the safety of students, please visit [cnu.edu/titleixeo](https://cnu.edu/titleixeo).



# BILLING AND FINANCIAL AID

Business Office financial policies and procedures are governed by federal and state laws as well as policies set by the Board of Visitors. All billing and payment policies can be found in the Undergraduate Catalog and for any additional information, students and families can contact the Office of Student Accounts at [studentaccts@cnu.edu](mailto:studentaccts@cnu.edu) or **(757) 594-7195**.

## DATES TO REMEMBER

**Mid-July: Fall bills available**

**August: Fall bill due**

**Mid-November: Spring bills available**

**December: Spring bill due**

## Authorized Payer

Students have the ability to make their family members or others authorized payers online through CNU Live. Students can find more information on how to set this up through the Admitted Student System.

## Loans

Federal subsidized and unsubsidized loans are available to students who submit a Free Application for Federal Student Aid (FAFSA) and meet the eligibility criteria. Other loans may come in the form of Federal Parent PLUS Loans or private education loans. Christopher Newport University is unable to recommend specific private lenders to students and families.

## SNAP Benefits

The Supplemental Nutrition Assistance Program (SNAP) provides monthly benefits to supplement the purchase of food. Eligibility for SNAP is based on financial and nonfinancial criteria, and students may be eligible if they meet certain criteria.

A student who is enrolled at least half-time at Christopher Newport and is *actively participating* in the Federal Work Study Program during the regular school year may be eligible to apply for SNAP benefits.

Eligible students can use SNAP benefits to buy food through an EBT card (which can be used like a debit card at qualifying retailers). SNAP can be used to buy food at supermarkets, local grocery stores, corner stores, farmer's markets, and online.

### Check your eligibility and apply:

- Online at [commonhelp.virginia.gov](http://commonhelp.virginia.gov)
- By phone at **1-855-635-4370**
- In person at the local Department of Social Services (Newport News Department of Human Services, 6060 Jefferson Ave., Newport News, VA 23605)

**More information related to financial aid options can be found online at [cnu.edu/financialaid](http://cnu.edu/financialaid), or by contacting the Office of Financial Aid at [finaid@cnu.edu](mailto:finaid@cnu.edu) or **(757) 594-7170**.**



**Loans**



**Private Scholarships**



**Tuition**



# INFORMATION TECHNOLOGY SERVICES

**Information Technology Services (ITS) offers a wide range of services for students, including recommendations for computer purchases, support for Christopher Newport applications and wireless/wired internet access.**

## Software we provide:

- Microsoft Office 365 - full access on up to five computers for students during their time at Christopher Newport.
- Google Workspace for Education - Gmail, Google Calendar, Google Drive (document storage) and Google Docs/Sheets/Slides (collaborative editing software).
- Wolfram Mathematica - a full-featured computer algebra system used in science and math courses.
- SPSS - statistical software used in a wide range of courses at the University; detailed instructions will be provided if a student is required to use this software.
- MATLAB - *MATLAB* is a programming and numeric computing platform used by millions of engineers and scientists to analyze data, develop algorithms, and create models.
- Atlas.ti - a computer-assisted qualitative data analysis software that facilitates analysis of qualitative data for qualitative, quantitative, and mixed methods research.

## Wi-Fi (eduroam)

The University provides high-speed wireless internet access called eduroam throughout campus, including in residence hall student rooms. Wireless internet access is also available in all other campus buildings, on the Great Lawn, and in outdoor teaching spaces. Visitors can use the available guest wireless network.

## Printing

Printing is available anywhere on campus using a mobile app or a computer with the PrintAnywhere software. Students will receive instructions on how to install and use PrintAnywhere upon arriving in the fall.

**Questions related to ITS can be directed to [helpdesk@cnu.edu](mailto:helpdesk@cnu.edu) or (757) 594-7079.**

---

# PARKING AND TRANSPORTATION SERVICES

**All students are welcome to bring a car to campus. Christopher Newport is a decal-controlled campus. Students bringing a car to the University must purchase a decal to park on campus; this includes both residential and non-residential students. Decals are valid for one academic year (August-August) and can be purchased through Parking Services either in person or online.**



# ACADEMIC TERMS

---

**Academic calendar** – A list of dates showing when fall, spring and summer terms begin and end, as well as other related dates, such as add/drop periods, final exams and commencement.

---

**Academic dean** – The administrative head of each college: the College of Arts and Humanities, College of Natural and Behavioral Sciences, College of Social Sciences, and the Luter School of Business.

---

**Academic department** – Division of a college dealing with a particular field of knowledge.

---

**Academic standing** – A reflection of student performance; a student who meets or exceeds minimum GPA requirements for his/her academic unit is considered to be in “good standing,” whereas a student not meeting those standards may be placed on academic “probation,” “suspension” or “dismissal.”

---

**Academic year** – Timeline that begins in August with fall semester, continues through spring semester, and concludes with a May term and two summer sessions.

---

**Add/drop** – Period during which students can electronically make a change to their schedules by removing or adding a course; this usually takes place the first week of fall and spring terms, and the last date to add/drop is always listed on the academic calendar. Note that changes in the total number of credit hours taken for the semester can have an impact on financial aid and other matters, so always carefully consider add/drop choices.

---

**Alumni** – Individuals who have attended and graduated from a particular college or university.

---

**Area of interest** – The preliminary area of study a student focuses on before declaring a major in the second semester of the sophomore year.

---

**College/school** – Group of academic departments administered by an academic dean; Christopher Newport has four: College of Arts and Humanities, College of Social Sciences, College of Natural and Behavioral Sciences, and the Luter School of Business.

---

**Corequisite** – Specific requirements that must be met during enrollment in a given class; these may consist of labs, courses, etc.

---

**Credit hour** – Standard unit of measuring coursework.

---

**Dean’s Academic Honor List** – Students who, in any given fall or spring semester, are enrolled in at least 12 credit hours, have earned no final grade below C, have not received the temporary grade of I in any course during the semester, and whose term grade-point average is at least a 3.50, are placed on the Dean’s Academic Honor List for that semester.

---

**Degree evaluation** – Electronic advising tool designed to assist in tracking a student’s progress toward graduation; this allows students to use “Degree Works” to see how curricular requirements of their catalog and area of interest relate to courses they have taken or will need to take.

---

**Declaring a major/minor** – Indicates that a student wishes to pursue a particular major and/or minor; many majors have specific admission requirements. At Christopher Newport, students formally declare their major/minor(s) during spring semester of their second year.

---

**Electives** – Courses students take for degree credit that are not already required. There are major or minor electives, which are topic-specific courses students can choose from within their specific area of study that will count toward their major/minor credit but are not specifically required; there are also non-program electives that provide degree credit for courses outside of their specific area of study or requirements.

---

**FERPA** – Abbreviation for the Family Educational Rights and Privacy Act, a federal law applying to educational agencies and institutions that receive funding under a program administered by the U.S. Department of Education. Under FERPA, schools must generally afford students who are aged 18 or over, or are attending a postsecondary institution, access to their education records, an opportunity to seek to have the records amended and some control over the disclosure of information from the records. At Christopher Newport, responsibility for authorizing the release of student information rests with the University registrar.

---

**First-generation student** – A student coming to college where neither parent has completed a bachelor’s degree.

---

**GPA** – Grade-point average, a calculation derived from dividing the grade points earned by the number of credits attempted.

---

**Hold** – A restriction that prohibits students from functions, such as registering for courses or receiving a transcript or diploma; most are due to not completing a required process or paying a financial obligation.

---

**Internship** – Work at a business or agency related to a student’s major and/or career plans; some departments allow for credit to be earned.

---



---

**Liberal Learning and Areas of Inquiry** –

Group of foundation courses required of undergraduates regardless of one's major.

---

**Living and Learning Community (LLC)** –

Every first-year student will be enrolled in a Living and Learning Community of approximately 16-20 students who live in close proximity in the residence halls and take two or three courses together that are linked in some way. It may be that the courses have a similar theme or are linked to a specific disciplinary program, but all guarantee courses that fulfill requirements in the liberal learning core curriculum or area of interest.

---

**Major** – Courses and requirements designated

as the student's primary area of specialization; this appears on the student's transcript.

The major does not appear on the diploma; only the degree – bachelor of arts, bachelor of music, etc. – appear.)

---

**Minor** – Collection of courses indicating additional specialization in an area of study beyond the major. Minors do not appear on the student's diploma but are listed on the transcript.

---

**Prerequisite** – Specific requirements that must be met prior to enrolling in a given class; these may consist of courses, test scores or enrollment in a specific program of study.

---

**Registration** – A period of time in which current students select courses for the upcoming semester; each student is given a specific time of day and alternate PIN in order to register.

---

**Scholar** – Web-based portal students and professors utilize. Some professors upload assignments, the syllabus, and PowerPoint slides from lectures and grades. Students can use Scholar to check grades, print out assignments and submit papers. Each student can access Scholar through CNU Connect.

**Semester** – Instructional period of 15 weeks plus a final examination period offered twice a year (referred to as fall and spring semester); additional instructional periods include May term, summer term I and summer term II.

---

**Seminar** – A class at a college or university in which an instructor and small group of students discuss a topic or topics.

---

**Service Distinction** – An honor students receive at graduation after completing 140 service hours in the Hampton Roads area a Service Distinction Leader (400 hours).

---

**Signing Day** – In the early spring of sophomore year, students attend this event to formally declare a major, receive a pin and meet representatives from the department of their newly declared major(s).

---

**Study Abroad** – Program in which students take courses for academic credit in a country other than one's own (see page 33).

---

**Syllabus** – Document describing the objectives, outcomes, assessment activities and structure of a course made available to students during the first week of classes.

---

**Transcript** – Serves as the student's official academic record and the University's official record of credits and degrees awarded, including courses taken by a student and grades received in each. Academic probation, academic suspension, academic dismissals, and disciplinary suspensions and expulsions also appear on the transcript.

---

**Tuition** – The amount of money that must be paid for classes; other fees may be assessed in addition to tuition.

**Undergraduate Catalog** – The

University's official publication of academic policies and procedures, programs of study, and course offerings for a particular academic year.

---

**Withdrawal** – Students may withdraw from a course after the Add/Drop period until the last day to withdraw or elect Pass/Fail (designated on the academic calendar). A grade of "W" will be reflected on students' official transcripts, but the "W" does not factor into a student's GPA. Students are allowed five course withdrawals during their time at CNU. After the fifth, any withdrawal automatically receives a grade of "F."

# CAMPUS TERMS

**CAB** – Campus Activities Board, student programming board. It plans a wide array of free social, cultural and educational events open to the entire student body.

---

**Captains Card** – Students' official University identification card.

---

**Captains Cash** – A balance students can upload to their Captains Card to pay for food around campus, laundry and printing – as well as use at select businesses within the community.

---

**CCE** – Center for Community Engagement (see page 34).

---

**CCP** – Center for Career Planning (see page 32).

---

**CNU Connect** – Web-based system that provides access to email, Scholar/Blackboard, internal department websites, etc.

---

**CNU Live** – Online system that provides access to personal student information, unofficial transcripts, course registration, financial information and more.

---

**Changing Tides** – Orientation session for transfer students held in late August and early January.

---

**The Captain's Log** – Student-led campus newspaper.

---

**The Compass** – Online portal for students to connect with the 200-plus organizations at CNU; events are listed here, as well as ways to get involved. Students can search organizations based on category, such as, service clubs, religious clubs, etc.

---

**The Commons** – One of two on-campus dining halls, located between Santoro residence hall and Warwick River residence hall.

---

**The Crow's Nest** – A fun place for students to hang out, socialize and study, located in the DSU.

---

**CSS** – Center for Student Success (see page 28).

---

**Dining Dollars** – Each student receives a specified balance depending on meal plan, which a student can use to purchase food and drinks outside of the campus dining halls.

---

**DSU** – David Student Union, where students will find Regattas, Chick-fil-A, the mailroom, the Crow's Nest, and such offices as Residence Life, Student Affairs, Orientation and Student Involvement and more.

---

**Einstein's Café** – CNU's coffee bar and cafe, located in the Tribble Library, which serves pastries, sandwiches, milkshakes, Starbucks coffee and much more.

---

**Fraternity and Sorority Life** – Includes values-based student organizations that foster development through leadership, scholarship, service and community (see page 39).

---

**Freeman Center** – Houses the campus gym, basketball courts, Center for Health and Wellness, and Counseling Services.

---

**Great Lawn** – Campus is centered around the Great Lawn, a large area where students can spend time and where events like FallFest and Commencement take place.

---

**ID number** – A unique set of eight numbers each student receives that can be found on one's Captains Card (student ID); this number also serves as each student's username to his or her CNU account.

---

**ORCA** – Office of Research and Creative Activity (see page 34).

---

**OSI** – Office of Orientation and Student Involvement, which fosters out-of-class learning through fun, interesting and engaging campus activities and events (see page 38).

---

**Regattas** – One of two dining halls on campus, located in the David Student Union.

---

**Title IX** – A comprehensive federal law that prohibits discrimination on the basis of sex, including, but not limited to, sexual assault, stalking and rape. Christopher Newport has an office dedicated to education and advocacy of Title IX cases reported to campus officials. Investigations are completed through an off-campus party in collaboration with CNU's Title IX office (see page 51).

---

**Welcome Week** – A weeklong program that occurs after move-in and before the first day of classes; first-year students attend a variety of information sessions and other community building events. This program acclimates students to campus even more while allowing them to get to know their roommates and become better prepared for the start of classes the following Monday.

---

**Work Study** – A form of financial aid through which students with financial need receive part-time jobs to earn money to help pay education expenses; money is paid directly to the student and not automatically applied to tuition and fees.

---

# TITLES TO KNOW

**Academic dean** – The highest administrative officer of a college.

---

**Captain Chris** – Christopher Newport's beloved mascot.

---

**Crew Leader** – Crew Leaders are our orientation leaders working with our Setting Sail and Welcome Week programs. They serve as the initial guides for incoming students and will help guide students to build a sense of community and connection on campus.



**Department chair** – An administrative officer holding faculty rank who is responsible for an academic department within a college.

---

**Faculty core adviser** – All first-year students are assigned a faculty core adviser (FCA) for the first two years to facilitate the early transition to University life; these advisers help students navigate and understand the liberal learning curriculum, provide insight regarding academic expectations, and offer general academic support.

---

**Leadership Adventure facilitator** – Facilitators serve as the orientation leaders for Leadership Adventure, for students who are a part of the President's Leadership Program (PLP). They work to integrate leadership theories into various team building exercises, sessions and small group experiences.

---

**Major adviser** – After Signing Day, students receive a major adviser to help them graduate on time and navigate the major's requirements; each major adviser is a professor within the department that houses the major selected. Students will meet with their major adviser once or twice a semester to work on schedules for the next semester and connect with resources to foster academic success.

---

**Provost** – The senior academic administrator at a college or university who provides supervision and oversight to the institution's curricular, instructional and research activities.

---

**Registrar** – University official who oversees the Office of the Registrar and is the custodian of your academic record. The Office of the Registrar facilitates class registration, issues with academic transcripts, certifies your enrollment and much more.

**Resident assistant (RA)** – A trained undergraduate student leader who helps foster community between members of a residence hall's floor or wing; they also keep residents safe by enforcing University policies. RAs live in the residence halls with the students.

---

**Residential fellow** – Professional staff member who lives in the residence hall, supervises the resident assistants, provides oversight to the building and its residents, and fosters community within the living environment.

---

**Student affairs** – The University division that provides co-curricular opportunities to promote success and engagement in the campus community. The division is the starting point for students with accessibility needs.



# STUDENTS

## NEXT STEPS CHECKLIST

- Ensure your immunization documentation has been uploaded to the immunization portal by July 1. Reach out to [immunizations@cnu.edu](mailto:immunizations@cnu.edu) or (757) 594-7155 with any questions.
- Send final official high school transcripts to the Office of Admission by July 1.
- Send final official transcript from dual enrollment institution and/or exam scores from the testing agency to the Office of Transfer Admission & Enrollment to earn dual enrollment credits from high school or credits from AP/IB/Cambridge exams (if applicable).
- Sign up for CNU Alert at [cnualert.info](http://cnualert.info). Be sure family members sign up also.
- Set up any necessary authorized payers through CNU Live. Review the fall tuition bill and ensure payment or payment plan is in place by late July.
- Purchase parking decal online or in person at the Ferguson Parking Deck (if applicable).
- Continue to complete appropriate modules in the Admitted Student System. Consistently check CNU email for an introduction from your core adviser, housing and move-in information, and next steps throughout the summer.
- Complete the AlcoholEdu and Sexual Assault Prevention online modules before arriving for move-in. Information and login instructions for these programs will be emailed to students in early August.
- Follow the class Instagram ([@cnu.2028](https://www.instagram.com/cnu.2028)) and Facebook pages for continued updates over the summer, during Welcome Week and throughout the next four years!



CHRISTOPHER NEWPORT  
UNIVERSITY